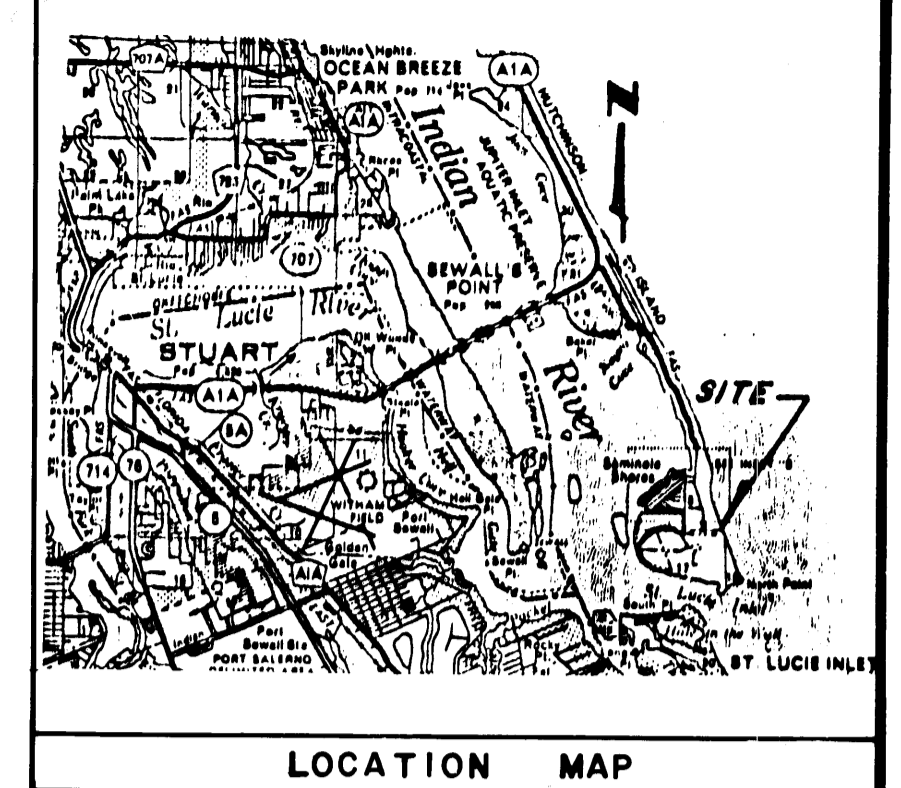


PLAT NO. 12 SAILFISH POINT P.U.D.

LYING IN FRACTIONAL SECTION 8,
TOWNSHIP 38 SOUTH, RANGE 42 EAST,
MARTIN COUNTY, FLORIDA

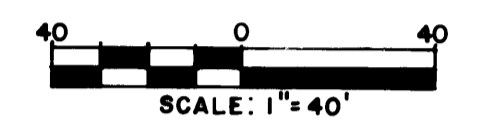
FILED FOR RECORD
MARTIN COUNTY, FLA.
85 MAY 22 P 3: 18
LOUISE V. ISAACS
CLERK OF CIRCUIT COURT
BY _____ D.C.



I, LOUISE V. ISAACS,
CLERK OF THE CIRCUIT COURT
OF MARTIN COUNTY, FLORIDA,
HEREBY CERTIFY THAT THIS
PLAT WAS FILED FOR RECORD
IN PLAT BOOK 9, PAGE 96,
MARTIN COUNTY, FLORIDA,
PUBLIC RECORDS, THIS 22
DAY OF May, 1985.
LOUISE V. ISAACS, CLERK
CIRCUIT COURT
MARTIN COUNTY, FLORIDA
BY: Charlotte Burkey
FILE NO. 556 291
(CIRCUIT COURT SEAL)

DESCRIPTION

COUNTY OF MARTIN
STATE OF FLORIDA
A PARCEL OF LAND LYING IN FRACTIONAL SECTION 8, TOWNSHIP 38 SOUTH,
RANGE 42 EAST, MARTIN COUNTY, FLORIDA. SAID PARCEL BEING MORE
PARTICULARLY DESCRIBED AS FOLLOWS:
BEGINNING AT THE SOUTHWEST CORNER OF PARCEL "B", AS SHOWN ON PLAT
NO. 1, SAILFISH POINT P.U.D., RECORDED IN PLAT BOOK 8, PAGE 10,
PUBLIC RECORDS OF MARTIN COUNTY, FLORIDA; THENCE PROCEED
S 15°00'00" E, ALONG THE EAST RIGHT-OF-WAY LINE OF S.E. SAILFISH
POINT BOULEVARD, AS SHOWN ON SAID PLAT NO. 1, A DISTANCE OF 357.84
FEET TO THE NORTHWEST CORNER OF LOT 38, AS SHOWN ON SAID PLAT NO. 1;
THENCE S 90°00'00" E, ALONG THE NORTH LINE OF SAID LOT 38, A
DISTANCE OF 317.66 FEET TO A POINT IN THE COASTAL CONSTRUCTION
SETBACK LINE AS SHOWN ON SAID PLAT NO. 1; THENCE N 11°41'23" W,
ALONG SAID SETBACK LINE, A DISTANCE OF 352.97 FEET TO A POINT IN THE
SOUTH LINE OF AFORESAID PARCEL "B"; THENCE S 90°00'00" W, ALONG SAID
SOUTH LINE, A DISTANCE OF 338.76 FEET TO THE POINT OF BEGINNING OF
THE HEREIN DESCRIBED PARCEL OF LAND.
SAID PARCEL CONTAINING 2.60 ACRES.



CERTIFICATE OF OWNERSHIP

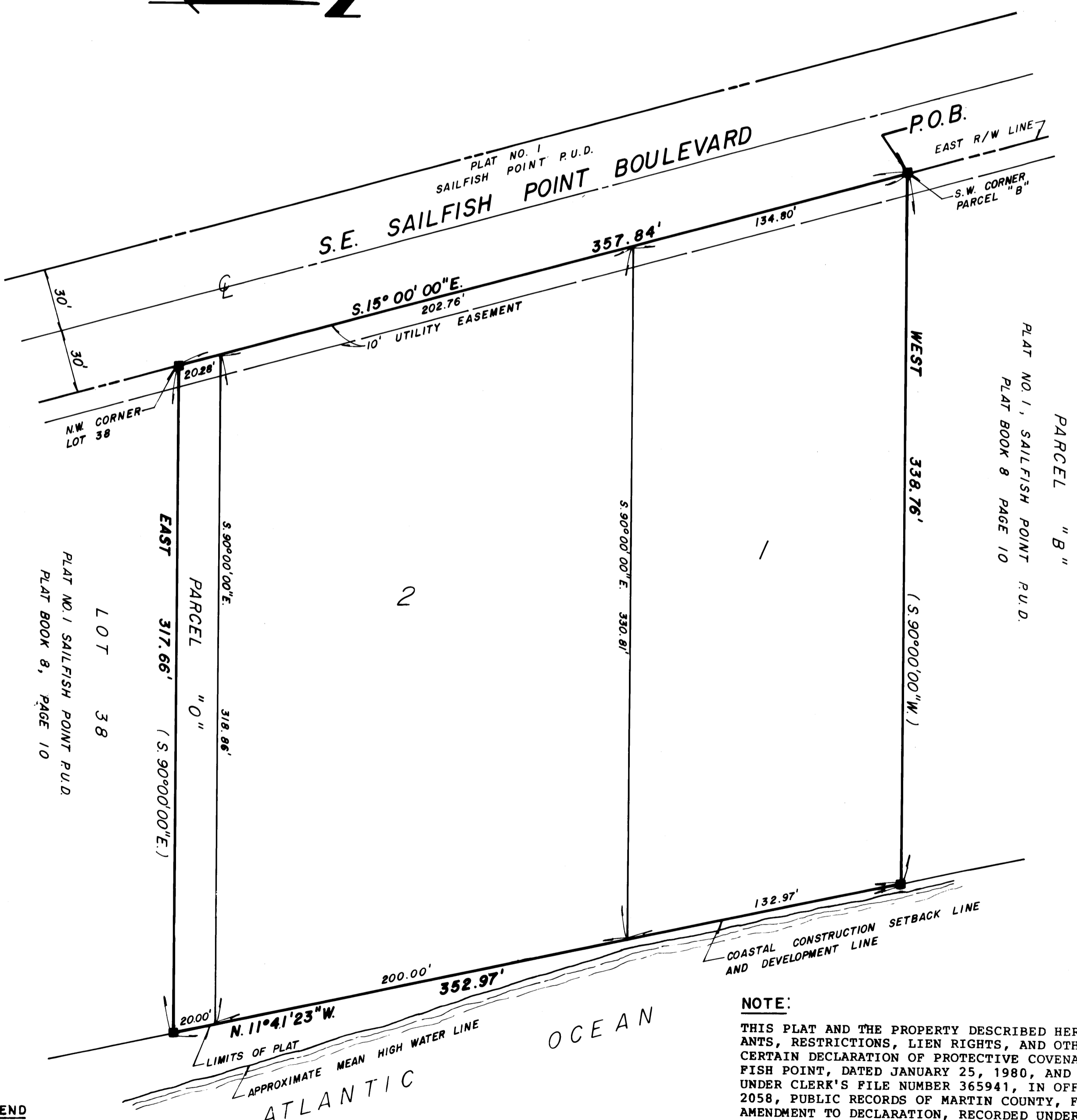
COUNTY OF MARTIN
STATE OF FLORIDA
SAILFISH POINT, INC., A DELAWARE CORPORATION, BY AND THROUGH
ITS UNDERSIGNED OFFICERS, DOES HEREBY CERTIFY THAT IT IS THE
OWNER OF THE PROPERTY DESCRIBED HEREON.
DATED: THIS 29th DAY OF April, 1985.
SAILFISH POINT, INC.,
A DELAWARE CORPORATION
ATTEST: Thomas J. Palmieri BY: Doran T. Seaquist, Jr.
ASSISTANT SECRETARY PRESIDENT

DEDICATION

COUNTY OF MARTIN
STATE OF FLORIDA
SAILFISH POINT, INC., A DELAWARE CORPORATION, BY AND THROUGH ITS UNDER-
SIGNED OFFICERS DOES HEREBY DEDICATE AS FOLLOWS:
1. THE UTILITY EASEMENT AS SHOWN HEREON MAY BE USED FOR UTILITY PURPOSES
BY ANY UTILITY COMPANY, INCLUDING C.A.T.V., IN COMPLIANCE WITH SUCH
ORDINANCES AND REGULATIONS AS MAY BE ADOPTED FROM TIME TO TIME BY THE
BOARD OF COUNTY COMMISSIONERS OF MARTIN COUNTY, FLORIDA.
SIGNED AND SEALED THIS 29th DAY OF April, 1985, ON BEHALF OF SAID CORPORATION BY ITS PRESIDENT AND ATTESTED BY ITS
ASSISTANT SECRETARY.
SAILFISH POINT, INC., A DELAWARE CORPORATION
ATTEST: Thomas J. Palmieri BY: Doran T. Seaquist, Jr.
ASSISTANT SECRETARY PRESIDENT

ACKNOWLEDGEMENT

COUNTY OF MARTIN
STATE OF FLORIDA
BEFORE ME, THE UNDERSIGNED NOTARY PUBLIC, PERSONALLY APPEARED
DORAN T. SEAQUIST, JR. AND THOMAS J. PALMIERI, PRESIDENT AND
ASSISTANT SECRETARY, RESPECTIVELY, OF SAILFISH POINT, INC., A
DELAWARE CORPORATION, AND THEY ACKNOWLEDGED THAT THEY EXECUTED
SUCH INSTRUMENT AS SUCH OFFICERS OF SAID CORPORATION.
WITNESS MY HAND AND OFFICIAL SEAL THIS 29th DAY OF April,
1985.
MY COMMISSION EXPIRES: _____
Anna J. Wilkinson
NOTARY PUBLIC



LEGEND
■ - FOUND P.R.M.

BEARING BASE:
THE EAST RIGHT-OF-WAY LINE OF
S.E. SAILFISH POINT BOULEVARD IS
TAKEN AS BEING S.15°00'00\"/>

SUBDIVISION PARCEL
CONTROL NO. 28 38 42 015 000 0000 0

NOTE:
THE FOLLOWING BUILDING SET-
BACK LINES SHALL APPLY TO
LOTS 1 AND 2 AS PLATTED HERE-
ON.
1. FRONT SETBACK = 25.0 FEET
FROM RIGHT-OF-WAY LINE.
2. SIDE SETBACK = 15.0 FEET
FROM PROPERTY LINE.
3. REAR SETBACK = 50.0 FEET
FROM COASTAL CONSTRUCTION
SETBACK LINE.
THIS INSTRUMENT WAS PREPARED BY:
GARY V. PORTER FOR
LINDAHL, BROWNING, FERRARI &
HELLSTROM, INC.
210 JUPITER LAKES BOULEVARD
P.O. BOX 727
JUPITER, FLORIDA 33458

NOTE:
THIS PLAT AND THE PROPERTY DESCRIBED HEREIN, ARE SUBJECT TO THE COVEN-
ANTS, RESTRICTIONS, LIEN RIGHTS, AND OTHER PROVISIONS CONTAINED IN THAT
CERTAIN DECLARATION OF PROTECTIVE COVENANTS AND RESTRICTIONS FOR SAIL-
FISH POINT, DATED JANUARY 25, 1980, AND RECORDED FEBRUARY 4, 1980,
UNDER CLERK'S FILE NUMBER 365941, IN OFFICIAL RECORD BOOK 488, AT PAGE
2058, PUBLIC RECORDS OF MARTIN COUNTY, FLORIDA, AS AMENDED BY THE FIRST
AMENDMENT TO DECLARATION, RECORDED UNDER CLERK'S FILE NUMBER 399150, IN
OFFICIAL RECORD BOOK 513, AT PAGE 1094, PUBLIC RECORDS OF MARTIN COUNTY,
FLORIDA, AND THE SECOND AMENDMENT TO DECLARATION, RECORDED UNDER CLERK'S
FILE NUMBER 478598, IN OFFICIAL RECORD BOOK 514, PAGE 1112, PUBLIC
RECORDS OF MARTIN COUNTY, FLORIDA, AND THE THIRD AMENDMENT TO DECLARA-
TION, RECORDED UNDER CLERK'S FILE NUMBER 514594, IN OFFICIAL RECORD
BOOK 602, PAGE 899, PUBLIC RECORDS OF MARTIN COUNTY, FLORIDA, TOGETHER
WITH THE COVENANTS, RESTRICTION, AND OTHER PROVISIONS CONTAINED IN THAT
CERTAIN SUPPLEMENTARY DECLARATION OF PROTECTIVE COVENANTS AND RESTRICT-
TIONS FOR PLAT NO. 12 SAILFISH POINT P.U.D., RECORDED CONCURRENTLY WITH THE
RECORDATION OF THIS PLAT.

MARCH 1985
SHEET 1 OF 1

TITLE CERTIFICATION

COUNTY OF MARTIN
STATE OF FLORIDA
TITLE UNDERWRITER AGENCY, INC., BY ITS UNDERSIGNED
VICE-PRESIDENT, HEREBY CERTIFIES THAT THE RECORD TITLE
OF THE HEREON DESCRIBED LANDS IS VESTED IN SAILFISH POINT
INC., A DELAWARE CORPORATION, AS BY THE CERTIFICATE OF
OWNERSHIP ELSEWHERE APPEARING.
ALL MORTGAGES ON THE LAND DESCRIBED HEREON HAVE BEEN
SATISFIED. DATED THIS 29th DAY OF April, 1985.
TITLE UNDERWRITER AGENCY, INC.
BY: Jess Wright
JESS WRIGHT, VICE-PRESIDENT
18 NO. COLORADO AVENUE
STUART, FLORIDA 33494

SURVEYOR'S CERTIFICATE

COUNTY OF MARTIN
STATE OF FLORIDA
I, S. DALE MONROE, DO HEREBY CERTIFY THAT THIS PLAT OF PLAT
NO. 12 SAILFISH POINT P.U.D., IS A TRUE AND CORRECT REPRESENTATION
OF THE LANDS SURVEYED, THAT THE SURVEY WAS MADE UNDER MY
SUPERVISION AND THE SURVEY DATA COMPLIES WITH ALL REQUIREMENTS
OF CHAPTER 177, FLORIDA STATUTES.
S. Dale Monroe
S. DALE MONROE
REGISTERED SURVEYOR NO. 3956
STATE OF FLORIDA

COUNTY APPROVAL

COUNTY OF MARTIN
STATE OF FLORIDA
THIS PLAT IS HEREBY APPROVED BY THE UNDERSIGNED ON THE DATE,
OR DATES INDICATED.
5/16/85 DATE James B. Williams COUNTY ENGINEER
5-21-85 DATE Richard K. O'Neil COUNTY ATTORNEY
DATE Chairman PLANNING AND ZONING COMMISSION OF MARTIN COUNTY, FLORIDA
5/21/85 DATE Chairman BOARD OF COUNTY COMMISSIONERS OF MARTIN COUNTY, FLORIDA
ATTEST: Louise V. Isaacs CLERK
By Charlotte Burkey D.C.

LINDAHL, BROWNING, FERRARI & HELLSTROM, INC.
CONSULTING ENGINEERS, PLANNERS & SURVEYORS
P.O. BOX 727 911 COLORADO AVENUE
JUPITER, FLORIDA 33458 STUART, FLORIDA 33494
117 SOUTH SECOND STREET
FORT PIERCE, FLORIDA 33404